



Be Prepared while Recreating with Pierce County

# PARKS ARE PREPARED *are you?*

*how to prepare*

## BUILD YOUR GRAB & GO VEHICLE KIT

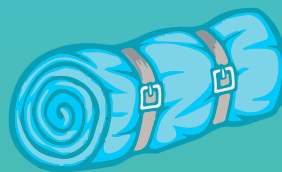
Items in this Kit Should Have Enough Supplies for a 24 Hour Period



Bottled Water for Each Person



Hat or Jacket for Extra Warmth



Blankets



Flashlight, Extra Batteries, & Phone Charger



Food for Each Person



Hand & Feet Warmers



First Aid Kit & Insurance Cards

*other ways to prepare*



### WHAT'S ON YOUR BUCKET LIST?

Follow a 5-step plan now so you can act fast and respond quickly.

**Learn More >**

[www.piercecountywa.org/bucketlist](http://www.piercecountywa.org/bucketlist)



### PERSONAL PREPAREDNESS

Plan ahead and increase your ability to survive in the face of disaster.

**Learn More >**

[www.piercecountywa.org/prepare](http://www.piercecountywa.org/prepare)



Pierce County  
Parks & Recreation



Pierce County  
Emergency Management