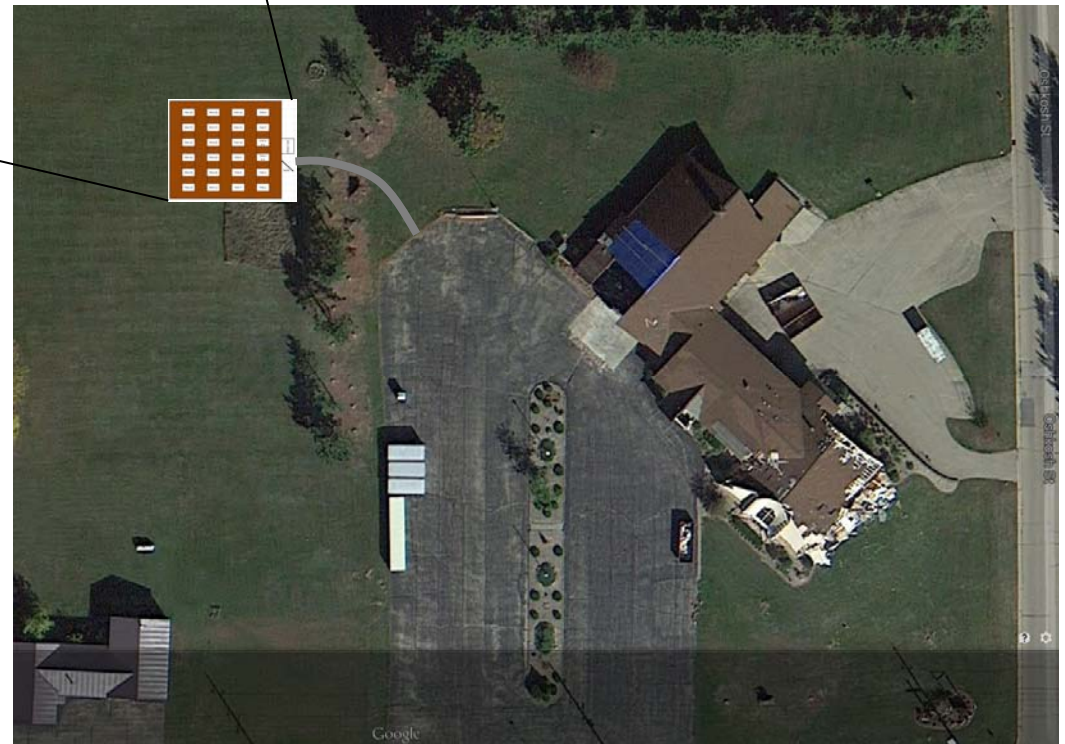
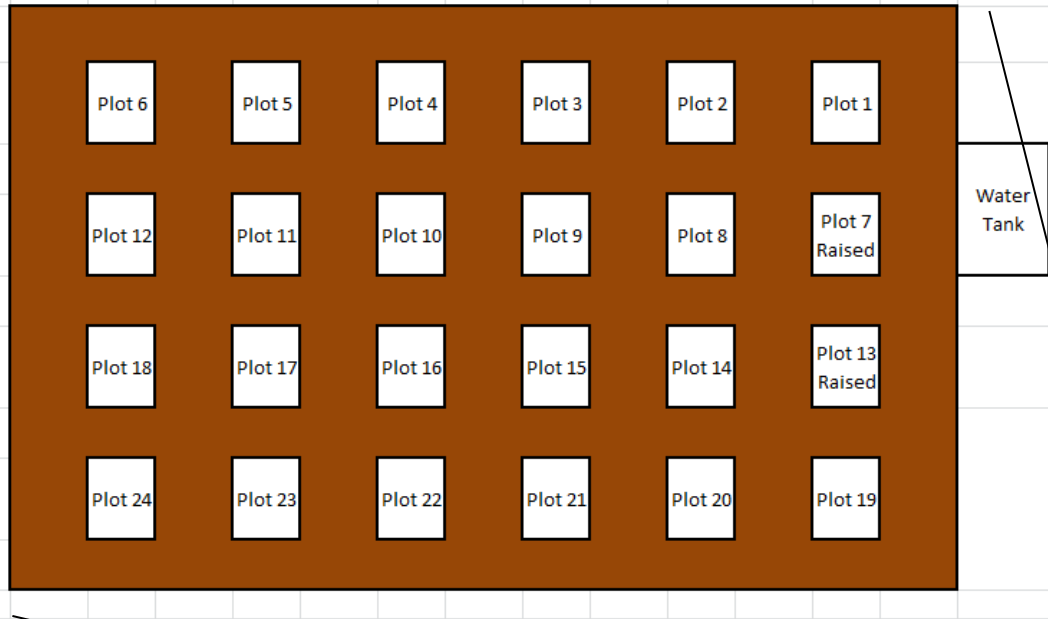
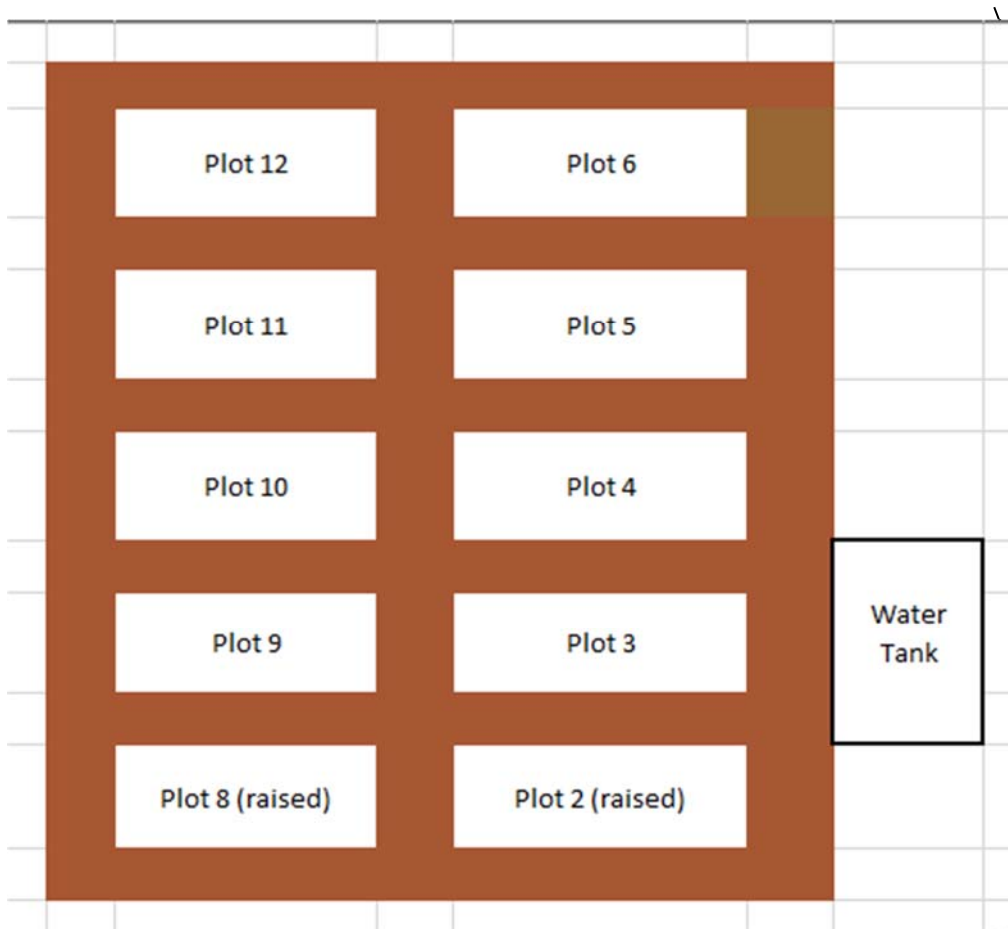


Trinity Evangelical Lutheran Church Community Garden Site

**709 W. Beckert Road
New London, WI 54961**



- Community Garden Plots will be 4 feet wide by 10 feet long.
- Plots #7 and #13 will be raised 30 inches for wheelchair accessibility. To reserve plots #7 or #13 please contact the New London Parks & Recreation office at 920.982.8521.
- Onsite water will be available for gardeners.



**United Methodist Church
Community Garden Site
709 W. Pine Street
New London, WI 54961**



- Community Garden Plots will be 4 feet wide by 10 feet long.
- Plots #2 and #8 will be raised 30 inches for wheelchair accessibility. To reserve plots #2 or #8 please contact the New London Parks & Recreation office at 920.982.8521.
- Onsite water will be available for gardeners.

